

Danville Needs Improvements More Than New Territory!

DRY-ROT---or---ROTTEN DEAL??

At a recent meeting of the City Council and the Committees planning for annexing county territory it was said that unless this annexation was accomplished Danville was in danger of DRY-ROT.

Danville's present territory is six square miles and yet you find that there are still within its boundary some 4,000 dry toilets—no sewerage.

Many people in the area annexed by Danville sixteen years ago have been seeking sewerage and relief from the unsanitary conditions now existing in the city, and to this time have received no relief.

Not only will this proposed annexation fail to give this remedy, but when 14 square miles additional are incorporated, development of present territory will be put off indefinitely.

There are sections in Danville today without

sewerage, water, paved streets, sidewalks and insufficient lights. When can you people of Danville hope to have these conveniences which were promised you, if this additional 14 square miles burden is assumed?

Danville's dry-rot is the failure of officials to meet its responsibility to its people, indifference to its responsibility to its present citizens. If the city takes in additional square miles and gives this area any sort of service which it will promise them, it will be at the expense of you present citizens, who will have to assume a huge additional debt.

Making the PRESENT Danville a BETTER place to live is NOT DRY-ROT... but to neglect any part of you citizens in the present six square miles in order to annex more territory and plunge you deeper in debt... and spread your services thinner over 20 square miles is a ROTTEN DEAL.

LOOK AT THE PICTURES AND DECIDE



Residents living on Chatelaine Avenue, South Danville, annexed in 1933, still have no sewerage. White residents in this section, like a number of thousands of others throughout Danville have only dry toilets.



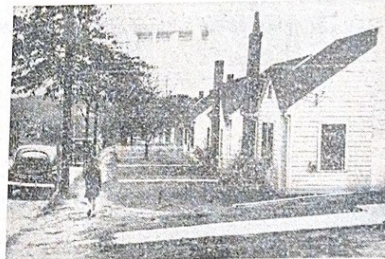
This is how Danville solves its housing problem in the area annexed in 1933. A family of six live, eat, and cook in a one-room bus body. This family enjoys the comforts of a dry toilet, seen at right.



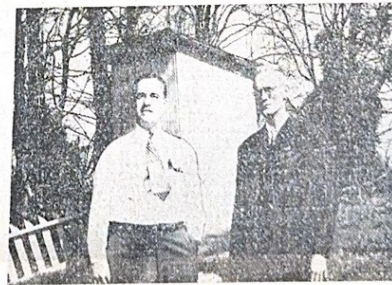
You don't live here but some of you have servants who do. Slum sections like this, steeped in filth, are disease breeders. This is in the center of Danville, just a "stone throw" from the City's Municipal Building, not far from the heart of the city. This picture was made from the grounds of the Robert E. Lee (white) School which overlooks the dry toilets and dirt and rubbish.



Tate Street in North Danville annexed sixteen years ago, would be much better if they had gutters, curbs, sidewalks and paved roads. White residents living in this part of Danville, just off the main street, also have no sewerage. The water reservoir is seen in the background.



Children living on Myrtle Avenue (just off Main) have to walk to school on this dirt sidewalk, which becomes muddy after a hard rain... it's not safe for children to walk in the street. There are many streets without continuous sidewalks in the present six square miles... will they have to continue to do without to provide walks in the new 14 square miles?



"Before Danville takes over 14 additional square miles, the city should take care of its PRESENT SIX SQUARE MILES," say J. H. Hilliard and W. L. Richards, resident of Fuller Street, just off North Main Street, who explained "we have been before the City Council every year for nine years asking for sewerage and other necessities... all we get is promises." (Note dry toilet in background.)

Make Danville A Better City Before You Make It A Bigger City!

COUNTY CITIZENS COMMITTEE AGAINST ANNEXATION